

No tuition increase for four years

KU's unprecedented
commitment to Kansans:
The Four-Year Tuition Compact

How the KU Compact holds the line on costs

- For first-time freshmen, **tuition is fixed for four years; 0% increase for 4 years**
- Course fees **are set in a 4-year schedule**
- Students and families are **shielded from sudden spikes** in tuition
- Compact's '**clock**' gives students **a tangible incentive to finish in four years**



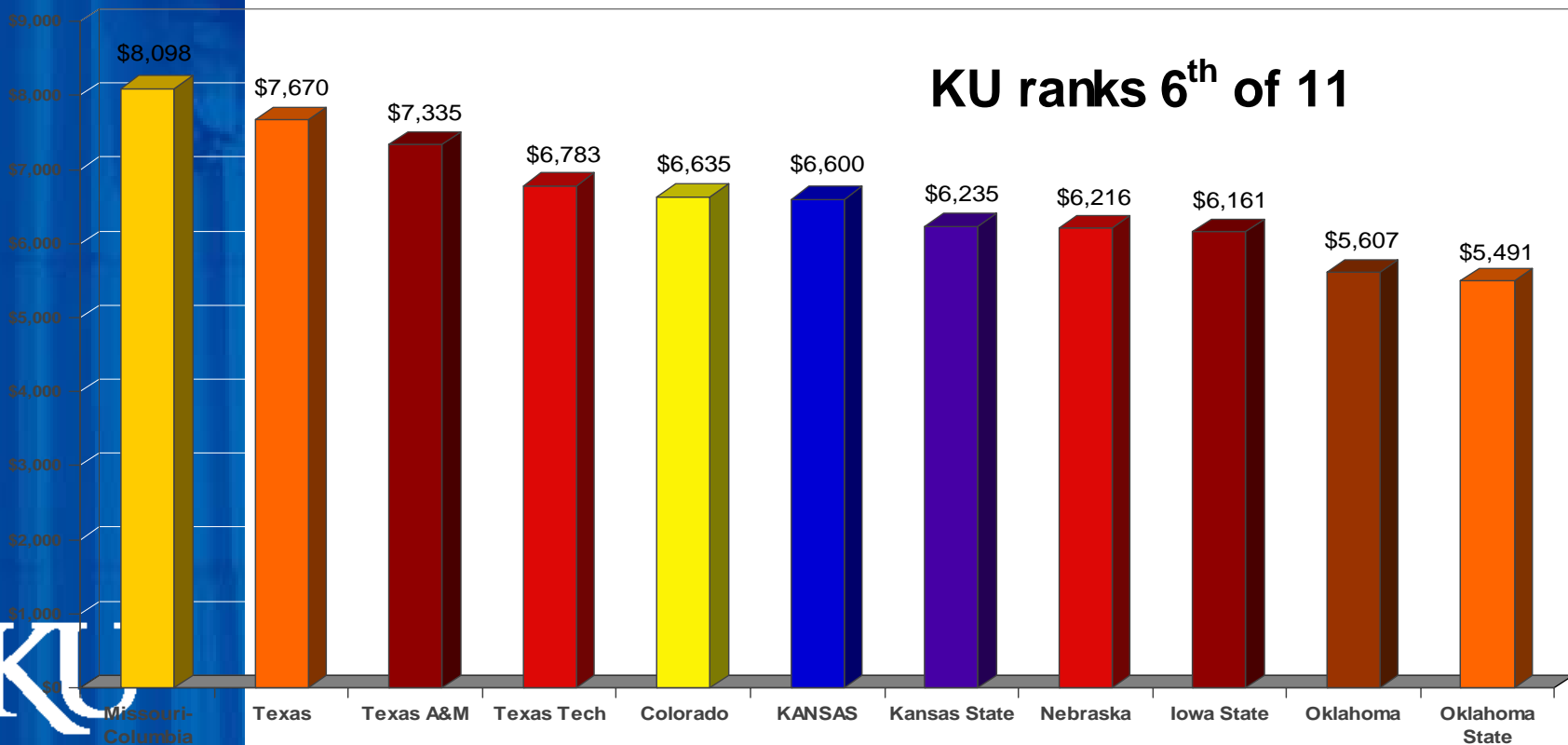
The Compact freezes tuition for for 4 years

Fall 2008 Proposed Tuition Rates

- **Standard tuition rate: 6% increase**
Juniors, seniors, graduate students, transfers
(resident & nonresident) not in the Compact
- **Students under the Fall 2007 Compact: 0% increase**
\$213/per credit hour. *No increase through 2011*
- **First-time Freshmen/the Fall 2008 Compact: 0% increase**
for 4 years: a fixed \$231.45 per credit hour rate
No increase through 2012
- **Medical student tuition: 5.5% increase**
- **Course fees: 6% increase**

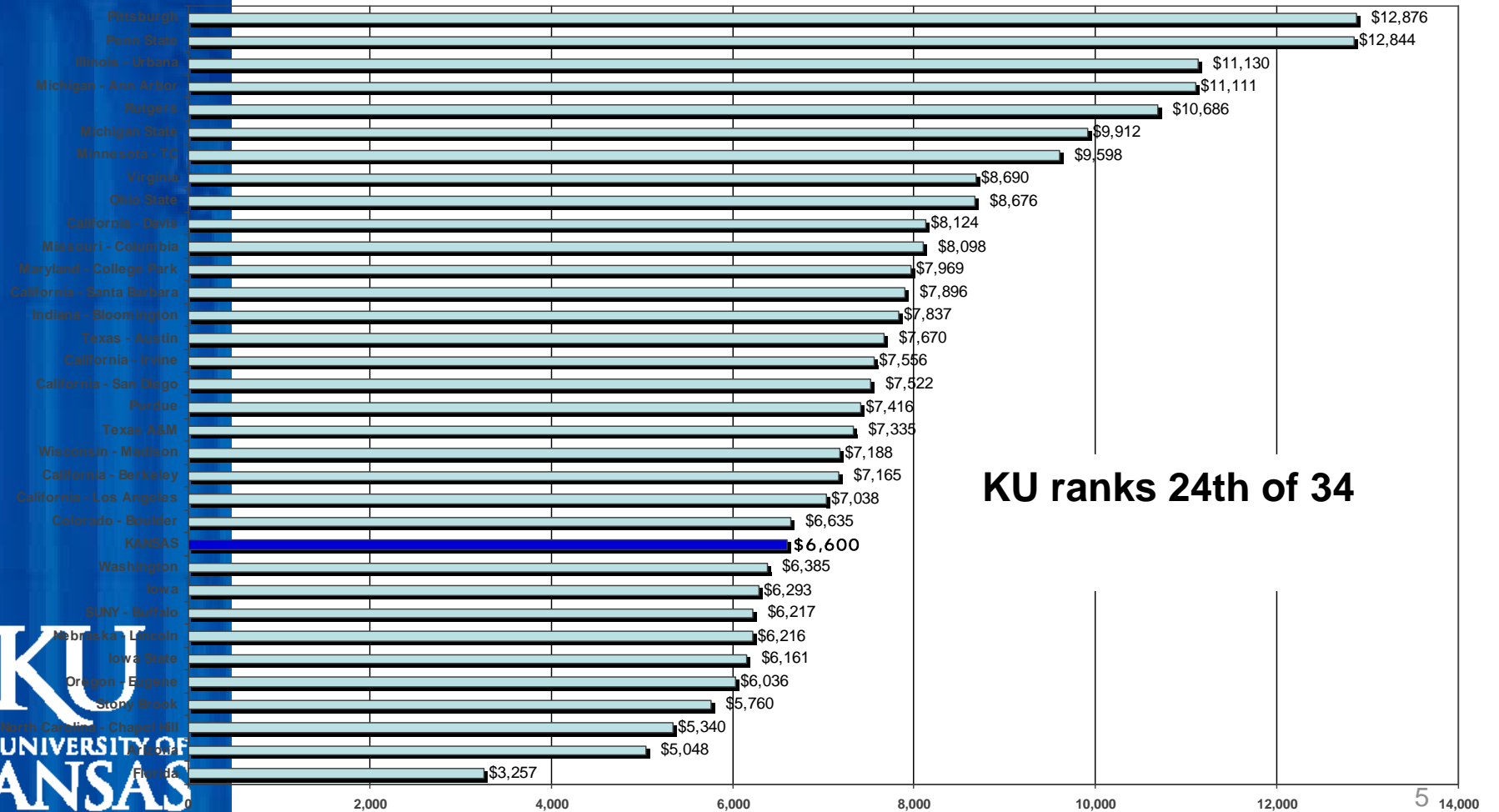
KU is keeping college affordable

Resident Tuition and Fees: Big 12 Public Universities



KU is keeping college affordable

Resident Tuition and Fees: AAU 34 Public Universities



KU ranks 24th of 34



KU faces a growing gap...

Regents' analysis of the gap:

- **Staying competitive:** State funding is 23% behind national average for research universities
- **Vulnerable to competitors:** KU salaries 6.6% below average for Regents peers
- **Meeting vital needs in changing times:** \$600k+ invested in 2007 in campus safety features
- **Facing rising costs:** Energy, technology, building maintenance, etc.



... maintains quality by holding the
line on expenses

KU fully taps available resources and implements innovations

- **Major savings** from purchasing project, energy efficiency contract, property insurance policy
- **Endowment underwrites salaries, scholarships (\$95M last year)** to the fiduciary limit
- Our researchers are **highly productive** (No. 1 ranking in percentage of Pharmacy faculty earning NIH research grants)

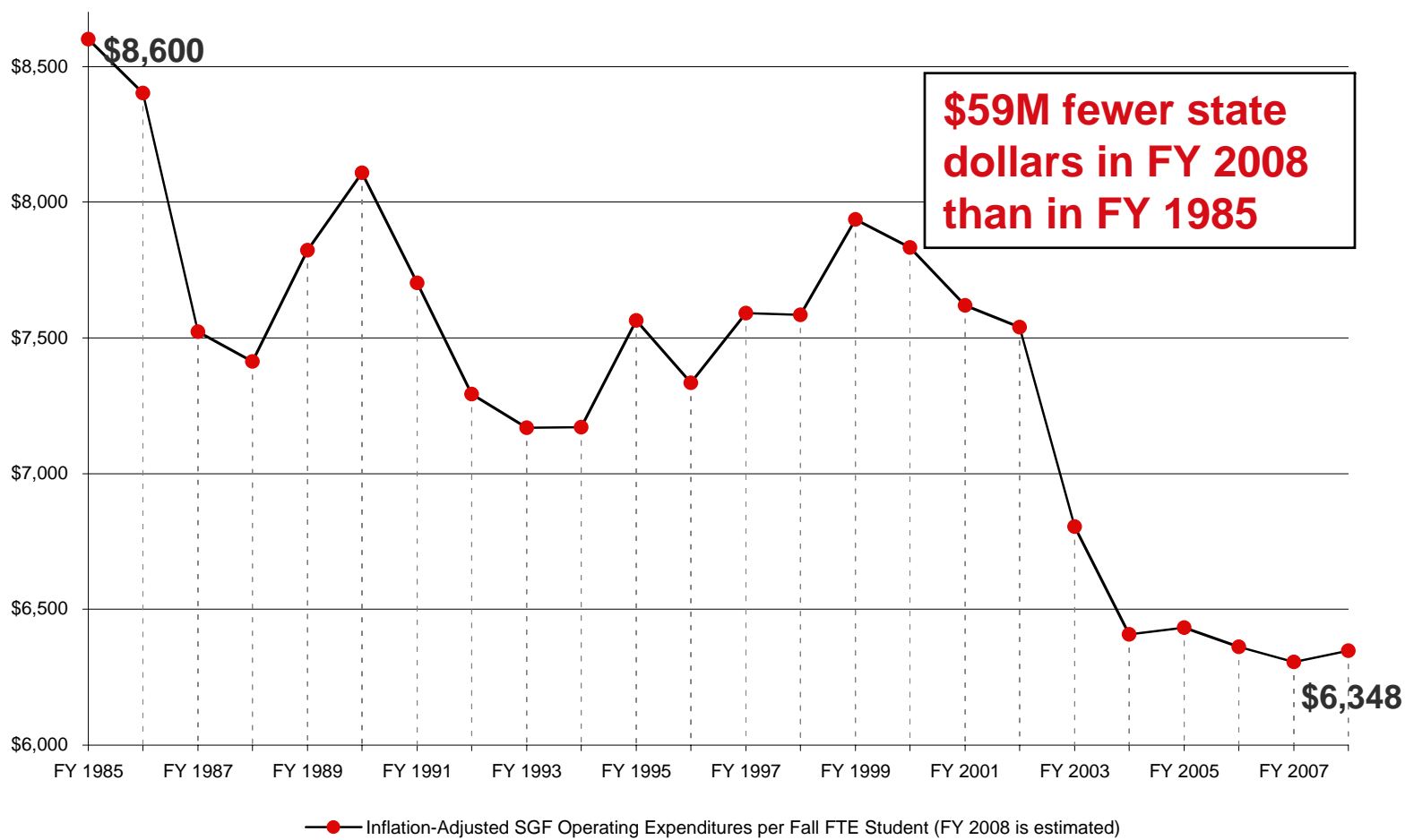
Tuition pays only half the cost of a resident student's education*

<u>Academic year</u>	<u>2007-08</u>
Resident	49.3%
Nonresident	129.4%



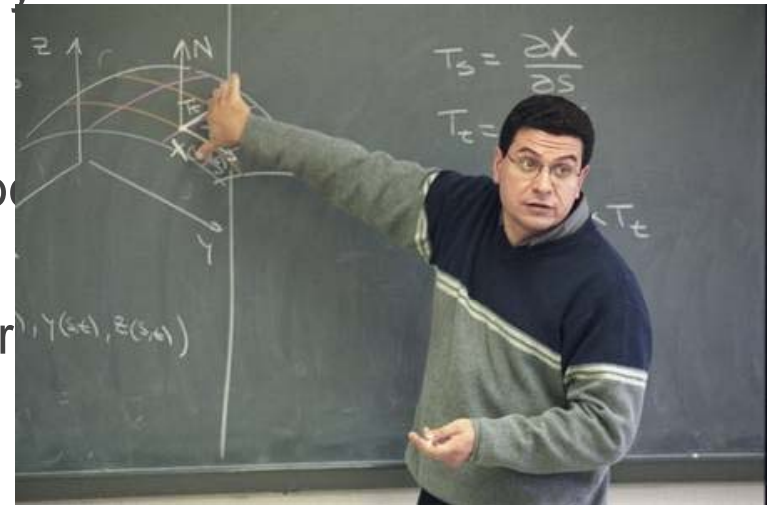
* Academic Instruction, Academic Support, Student Services, Institutional Support, Physical Plant/Utilities

SGF expenditures per KU-Lawrence FTE student have declined since FY1985



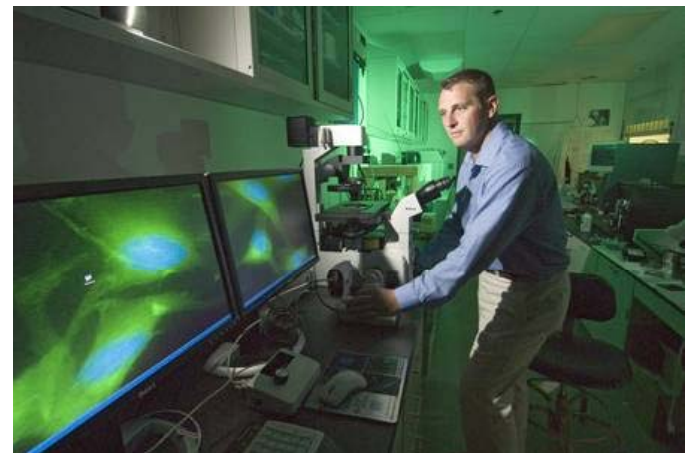
The 6% proposed rate *will* allow KU to...

- Annualize FY 2008 salary increases put into effect last July
- Cover increased fringe benefits costs
- Absorb higher utility charges due to rising rates
- Implement limited number of program enhancements
- Cover portion of FY 2009 salary increases (3%) that state funding doesn't



The proposed rates *will not* allow KU to...

- Keep pace with expected salary increases this year at peer universities
- Protect KU from universities in other states that will try to poach our teachers and researchers
- Narrow the funding gap with with competitor universities
- Make significant program enhancements



Maintaining the public trust



- **6,000 graduates annual**
- **142,000+ alumni in Kansas:**
Doctors, nurses, firefighters, police officers, pharmacists, teachers, engineers, architects, social workers, artists, business leaders, etc.
- **Benefits to Kansas:**
Cancer initiative, water quality, transportation safety, development and delivery of new medicines, telemedicine, alternative fuels, sustainable architecture, autism center, etc.

Maintaining the public trust

The public trusts that a KU degree will remain affordable to the state's prepared, committed students.



- *KU tuition and fees are below the median of competitor universities*
- *KU's Tuition Compact — first-time freshmen see no tuition increase for four years — is an unprecedented commitment to hold the line on college costs*
- *KU is honoring the Regents' request to stay within 6%*

No tuition increase for four years

Learn more about KU's
Four-Year Tuition Compact
at www.tuition.ku.edu